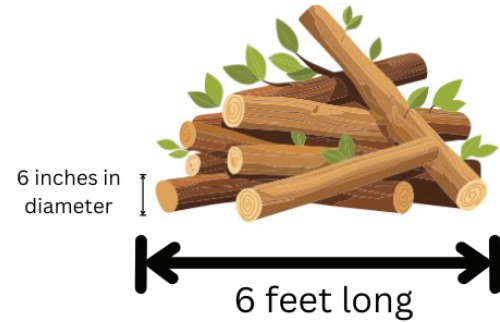




HELP KEEP GREENWOOD GREEN!

THE CITY WILL COLLECT:

- YARD WASTE
 - Limbs
 - Grass clippings
 - Leaves
- WHITE GOODS
 - Furniture & appliances
 - Refrigerators
 - Stoves
 - Washing machines
 - Dryers
 - Mattresses
 - Box springs
 - Mechanical engines/parts



THE CITY WILL NOT COLLECT:

- Comingled piles (mixed piles of yard waste and White Goods)
- Construction materials from building, repairs, or remodeling
- Materials from a contracted job (including lawn care, tree service, etc.)
- Hazardous waste
- Compressed gas or liquid containers (propane tanks, gas cans/drums, paint cans, etc.)
- Loose cardboard (place in recycle roll carts)
- Bagged grass clippings or leaves
- Loose trash/garbage (must be bagged & placed in roll cart)

HOW YOU CAN HELP:

- Put items in your green city issued roll cart whenever possible
- Place curbside items 3 feet from obstructions (utility poles, vehicles, mailboxes, etc.)
- Neatly place yard waste adjacent to the street in piles of reasonable size. (No more than 10 cubic yards)
- Have limbs cut to 6 in. diameter x 6 ft. long **MAX.**
- Need a dump trailer? Call (864) 942-8436.
- Need a recycling roll cart? Contact Greenwood County at (864) 942-8567

PILE IT RIGHT, TRASH OUT OF SIGHT!

Noncompliance with these requirements may result in penalties per City Ordinance, Which can include fees reflecting the actual cost by the City to abate the violation.

